
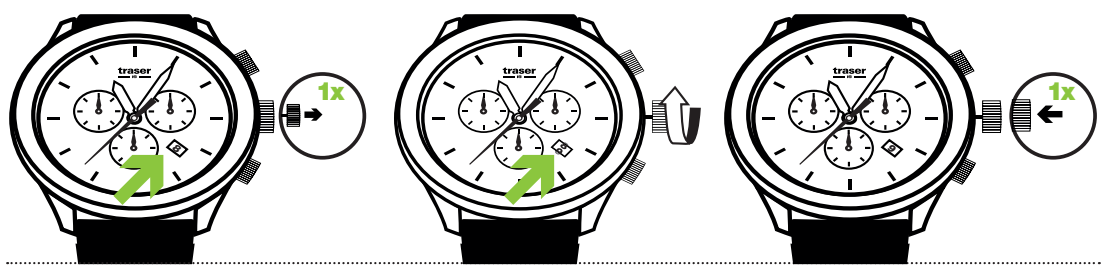


**INSTRUCTIONS**  
**QUARTZ CHRONOGRAPH**

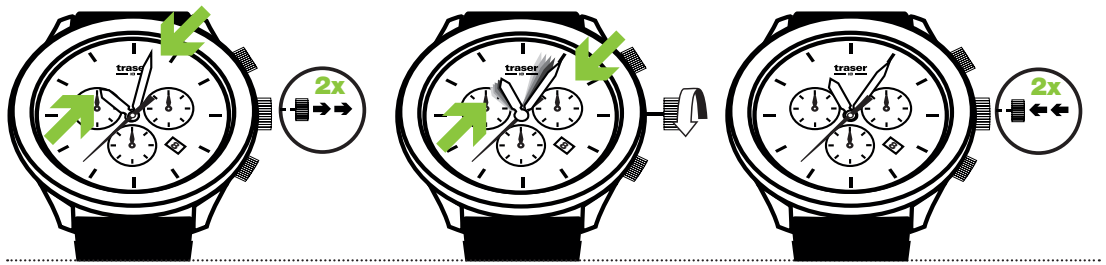
Terms and conditions of our warranty & maintenance tips available under following link:  
[www.traser.com/customer-service/warranty](http://www.traser.com/customer-service/warranty)

 In the case of a screw-down crown, unscrew the crown before, and screw it back in after setting your watch.

**DATE ADJUSTMENT**



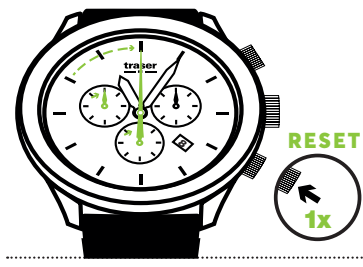
**TIME ADJUSTMENT**



**MODE 1.**  
CHRONOGRAPH  
START & STOP



**MODE 2.**  
CHRONOGRAPH  
EXTENDED TIME



**MODE 3.**  
CHRONOGRAPH  
INTERMEDIATE TIME

