

# traser®

swiss **IB** watches

## INSTRUCTIONS AUTOMATIC WATCH

Terms and conditions of our warranty & maintenance tips available under following link:

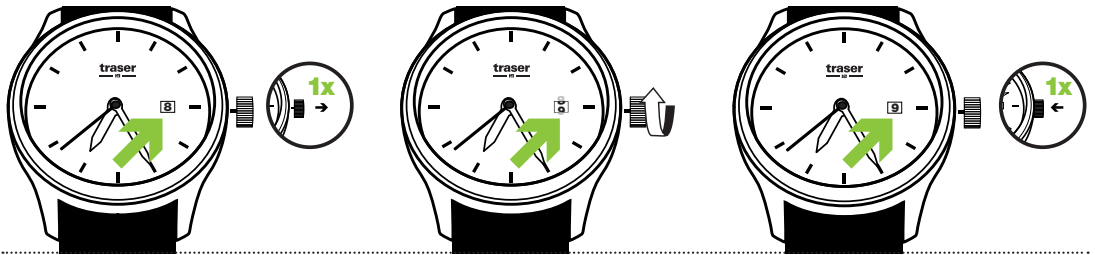
[www.traser.com/customer-service/warranty](http://www.traser.com/customer-service/warranty)

**In order to avoid damaging the movement, adjust the date between 2 am and 10 pm.**

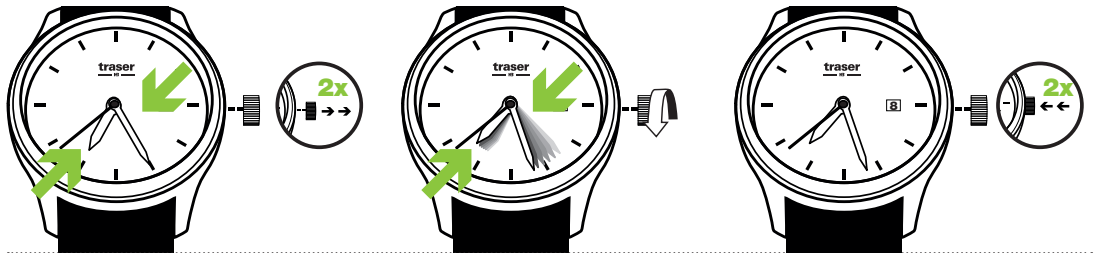


In the case of a screw-down crown, unscrew the crown before, and screw it back in after setting your watch.

### DATE ADJUSTMENT



### TIME ADJUSTMENT



### RECHARGE

