


### INSTRUCTIONS QUARTZ CHRONOGRAPH

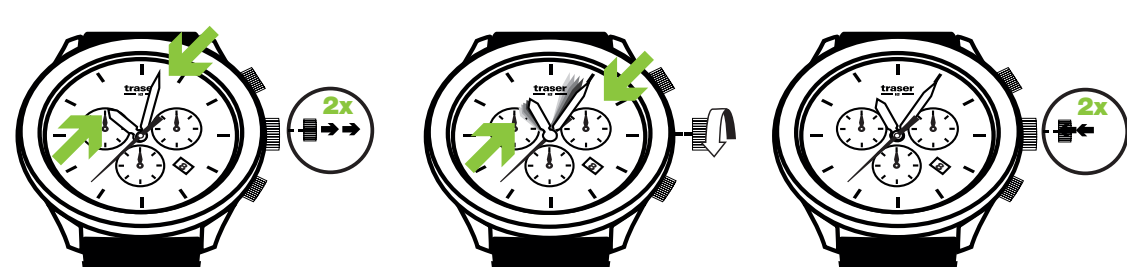
Terms and conditions of our warranty & maintenance tips available under following link:  
[www.traser.com/customer-service/warranty](http://www.traser.com/customer-service/warranty)

 In the case of a screw-down crown, unscrew the crown before, and screw it back in after setting your watch.

#### DATE ADJUSTMENT



#### TIME ADJUSTMENT

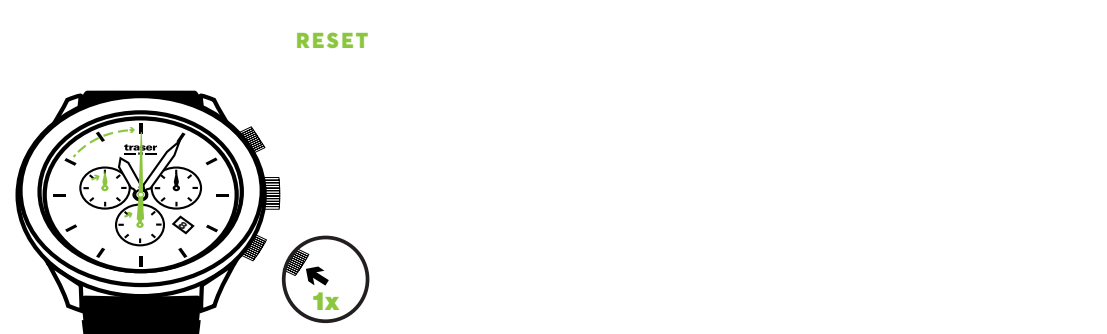


#### CHRONOGRAPH

### MODE 1. CHRONOGRAPH START & STOP



### MODE 2. CHRONOGRAPH EXTENDED TIME



### MODE 3. CHRONOGRAPH INTERMEDIATE TIME



#### READJUSTMENT OF THE CHRONOGRAPH HANDS

