

traser[®]

swiss **IB** watches

INSTRUCTIONS AUTOMATIC WATCH

Terms and conditions of our warranty & maintenance tips available under following link:

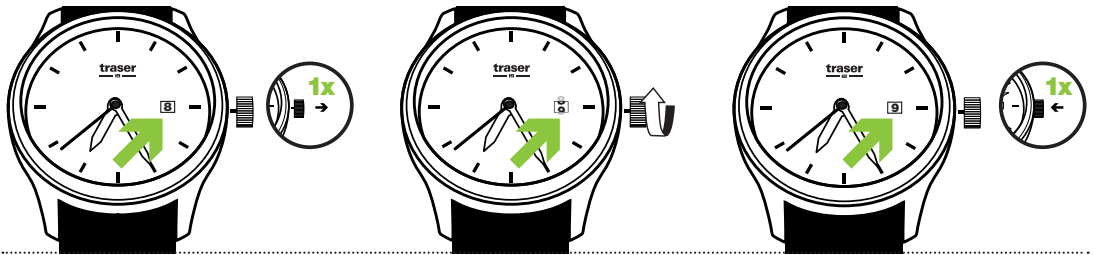
www.traser.com/customer-service/warranty

In order to avoid damaging the movement, adjust the date between 2 am and 10 pm.

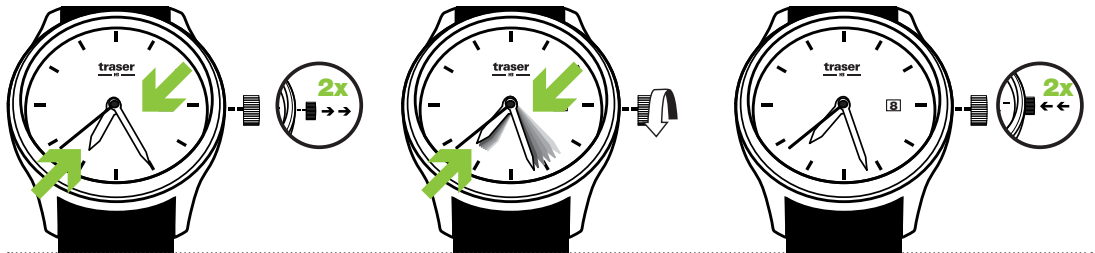


In the case of a screw-down crown, unscrew the crown before, and screw it back in after setting your watch.

DATE ADJUSTMENT



TIME ADJUSTMENT



RECHARGE

